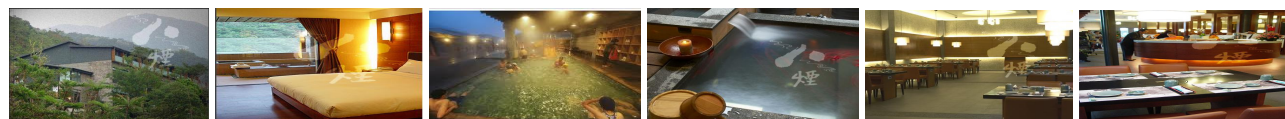


# Fascinating Holidays Pte Ltd

## Ba Ian Hot Spring Resort (八煙溫泉) & Just Sleep Hotel Taipei



Ba Ian Hot Spring Resort in Yamingshan National Park located in Jingshan Township embraces a beautiful natural landscaping and occasionally you can spot mountain monkey wondering in the woods.

You can indulge yourself in an indoor rose and essence hot spring bath, exquisite breakfast, fruits, outdoor coffee voucher, cold spring pool, open-air hot spring facilities, etc. Whether it is a family vacation, road trip with friends, lovers' secret date, or independent trip, you can also find your best comfort zone here!

This elegant Japanese-style resort is a great place for a soothing soak and fine cuisine in a natural setting.

04 Days - 03 Nights Ba Ian Hot Spring + Taipei City		HOTEL		PER ADULT [ S\$ ]			PER CHILD [ S\$ ]			
		STAR	ROH	SGL	TWN	3RD	TWN	CWB	CNB	
Located at Chung Hua Road Section 1, Taipei Oldest district and 5 minutes' walk to Hsin Men Ding Shopping area										
JUST SLEEP	捷絲旅 - 西門町館	ROH	4★	1298	1018	968	858	778	688	
Extension per person per night with breakfast				155	80	75	80	45	25	
JUST SLEEP	捷絲旅 - 西門町館	Deluxe	4★	1318	1028	968	868	778	688	
Extension per person per night with breakfast				165	90	75	90	45	25	
<b>High Season Dates : 01<sup>st</sup> September To 30<sup>th</sup> November And 22<sup>nd</sup> December To 31<sup>st</sup> December 2012</b>										
JUST SLEEP	捷絲旅 - 西門町館	ROH	4★	1338	1038	978	888	798	708	
Extension per person per night with breakfast				175	90	75	90	45	25	
JUST SLEEP	捷絲旅 - 西門町館	Deluxe	4★	1358	1058	978	898	798	708	
Extension per person per night with breakfast				185	100	75	100	45	25	
<b>BA-IAN HOT SPRING RESORT</b>		<b>SUNDAY TO THURSDAY</b>			<b>STAY FRIDAY</b>			<b>STAY SATURDAY</b>		
Extension per pax per night with breakfast		SGL	TWN	TRP	SGL	TWN	TRP	SGL	TWN	TRP
DELUXE ROOM	景觀套房	270	275	340	330	340	420	375	390	470

[ AF : 520A / 390C ]

**PACKAGE VALIDITY FROM 19<sup>TH</sup> JANUARY 2012 TO 31<sup>ST</sup> DECEMBER 2012**

### PACKAGE BLACK OUT PERIOD :-

During 02 - 07, 14 Feb, 24 Apr, 10 May, 06 Jun, 01 Jul, 06 Aug, 12 - 13 Sep, 07 - 10 Oct, 23 - 26 & 30 - 31 Dec 2012.  
Hotel surcharge will apply, rates to be advice upon booking.

### PACKAGE INCLUSION :-

Return GV2-N economy airfare Singapore - Taipei - Singapore by Singapore Airlines. (No Mileage).  
One ( 1 ) night stay at Ba-Ian Hot Spring Resort with breakfast ( Based on Weekday - Other day surcharge apply ).  
Two ( 2 ) nights Hotel stay at Taipei city with breakfast ( Based on Run Of House category ).  
Private car transfer from Taipei Airport - Ba ian Hot Spring resort in Jinshan Area.  
Private car transfer from Ba Ian Hot Spring Resort to Taipei City to your hotel stay in Taipei city.  
Private car transfer from Taipei city hotel to Taoyuan International Airport

### PACKAGE EXCLUDES :-

All international airport taxes and fuel surcharges, Visa Fees, Taiwan Government service charges and taxes, Personal Travel Insurance, Additional food and beverages, Optional Tours and Transfers, Tipping and all other personal expenditures, etc.

### BA-IAN HOT SPRING RESORT WEEKEND SURCHARGE :-

For stay on Friday night add on to above weekday package price : S\$065.00 per Twin room per night.  
For stay on Friday night add on to above weekday package price : S\$080.00 per Triple room per night.  
For stay on Saturday night add on to above weekday package price : S\$120.00 per Twin room per night.  
For stay on Saturday night add on to above weekday package price : S\$145.00 per Triple room per night.

### AIRLINE HIGH SEASON FARE SURCHARGE :-

**Ticket Sale / Issue And Travel Validity On/After 01<sup>st</sup> September 2011 to on / before 31<sup>st</sup> March 2012\*\***

For GV2-N Class : As per package ( This fare applies for all flight )\*\*\*.  
For Q Class (FIT) : Add on S\$100/- per adult and S\$075/- per child; applicable on all flights.  
For E Class (FIT) : Add on S\$330/- per adult and S\$248/- per child; applicable on all flights.  
For B Class (FIT) : Add on S\$480/- per adult and S\$360/- per child; applicable on all flights.

### TERMS AND CONDITIONS :-

Above packages prices is subjected to changes with or without prior notice and payment is based on cash or cheque only.